

Memorandum

To: College Senate Curriculum Committee

From: Luis Guzmán Valerio, Coordinator of the Modern Languages and Literatures Program

Date: Monday, October 16, 2023

Re: Discontinuing the modern language placement exam and changes in the modern language prerequisites

The Modern Languages and Literatures (ML) Program plans to cease offering the placement exam/exemption exam, which is the prerequisite for over 68 modern language courses.

The ML Program used the placement exam/exemption exam as the prerequisite since many students at LaGuardia speak languages other than English and need some form of assessment to identify the right level of the course based on their proficiency level in that language.

During the pandemic, however, we weren't able to administer the placement exam and, therefore, we have developed a self-diagnostic assessment (attached) in lieu of the placement exam. Having used the self-diagnostic assessment, the ML Program has concluded that the self-diagnostic assessment is effective and is even more desirable than the placement exam, which is not only expensive but also requires students' in-person presence on campus. The self-diagnostic assessment is used in conjunction with the practice of the re-leveling of students by professors and program coordinators that is carried out during the add/drop period at the beginning of the semester.

The secession of the placement exam/exemption exam requires a change in the prerequisite of the following courses. We are presenting this change as an informational item instead of presenting 68 revised course proposals.

Attachments:

- A list of the modern language courses with updated excised prerequisites
- ML self-diagnostic assessment
-

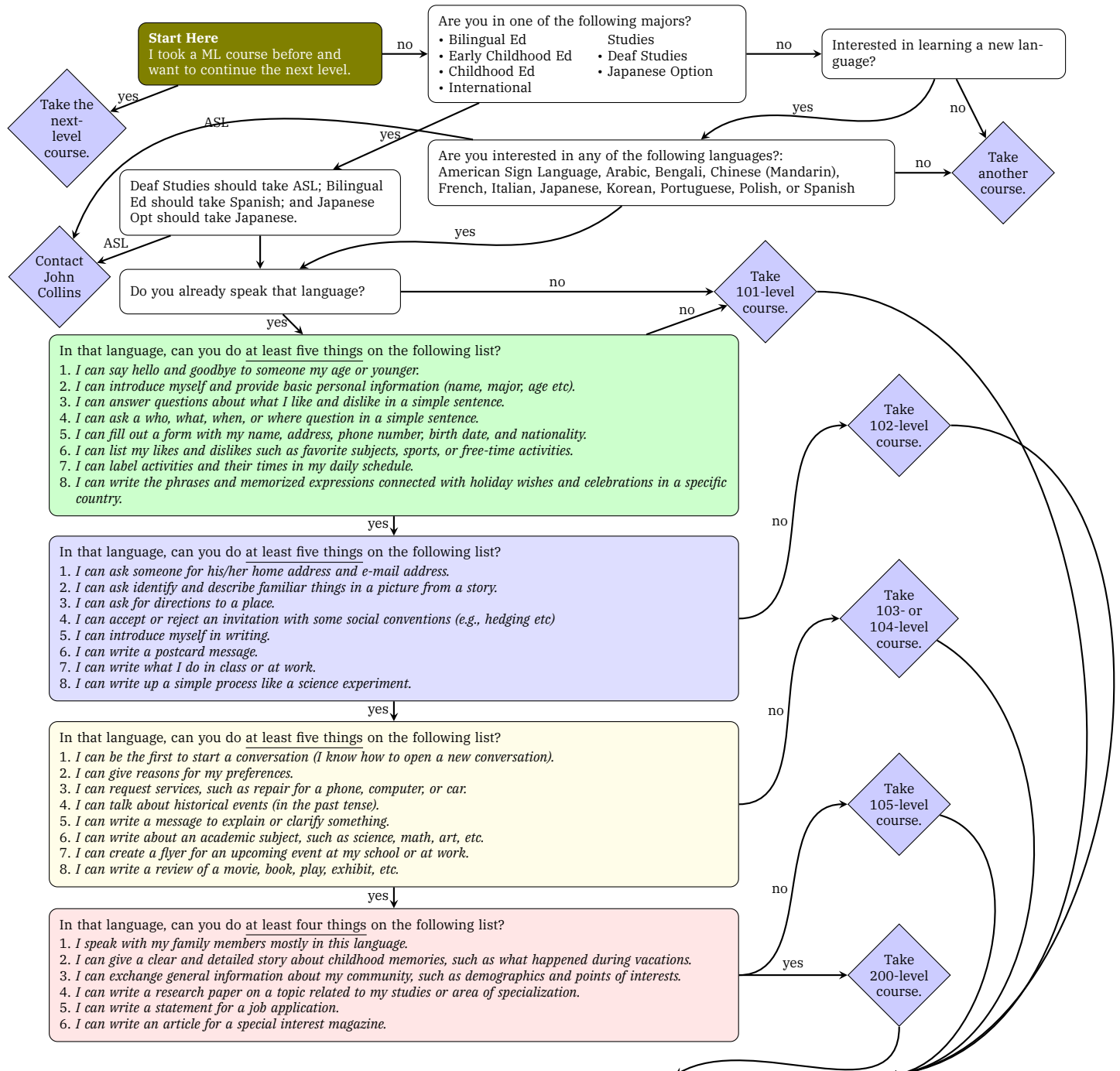
Index	Couse Code	Course Title	Current prerequisite	Updated prerequisite
1	ELA102	Elementary Arabic 2	ELA101 or Placement	None
2	ELA103	Intermediate Arabic 1	ELA102 or Placement	None
3	ELA104	Intermediate Arabic 2	ELA103 or Placement	None
4	ELA105	Arabic for Heritage Speakers	Placement	None
5	ELA201	Modern Arabic Literature	Placement	None
6	ELC102	Elementary Modern Chinese 2	ELC101 or Placement	None
7	ELC103	Intermediate Chinese	ELC102 or Placement	None
8	ELC104	Intermediate Chinese 2	ELC103 or Placement	None
9	ELC105	Chinese for Heritage Students	Placement	None
10	ELC106	Chinese for Heritage Speakers 2	Placement	None
11	ELC201	Modern Chinese Literature	Placement	None
12	ELC202	Contemporary Chinese Literature	Placement	None
13	ELC203	Classic Chinese Literature	Placement	None
14	ELF102	Elementary French 2	ELF101 or Placement	None
15	ELF103	Intermediate French 1	ELF102 or Placement	None
16	ELF104	Intermediate French 2	ELF103 or Placement	None
17	ELF105	French for Heritage Speakers	Placement	None
18	ELF201	French Literature from a Global Perspective	Placement	None
19	ELG204	Modern Greek Lit	Placement	None
20	ELH102	Elementary Hebrew 2	ELH101 or Placement	None
21	ELH201	Contemporary Hebrew Literature	Placement	None
22	ELI102	Elementary Italian 2	ELI101 or Placement	None
23	ELI103	Intermediate Italian 1	ELI102 or Placement	None
24	ELI104	Intermediate Italian 2	ELI103 or Placement	None
25	ELI200	Social Themes in Italian Literature	Placement	None
26	ELJ102	Elem Japanese 2	ELJ101 or Placement	None
27	ELJ103	Intermediate Japanese 1	ELJ102 or Placement	None
28	ELJ104	Intermediate Japanese 2	ELJ103 or Placement	None
29	ELJ105	Japanese for Heritage Speakers	Placement	None
30	ELJ201	Modern Japanese Literature	Placement	None
31	ELK102	Elementary Korean 2	ELK101 or Placement	None
32	ELK103	Intermediate Korean 1	ELK102 or Placement	None
33	ELK104	Intermediate Korean 2	ELK103 or Placement	None
34	ELK105	Korean for Heritage Speakers	Placement	None
35	ELK201	Modern Korean Literature	Placement	None
36	ELM102	American Sign Language 2	ELM101 or Placement	None
37	ELM103	American Sign Language 3	ELM102 or Placement	None
38	ELM104	American Sign Language 4	ELM103 or Placement	None
39	ELP102	Elementary Polish 2	ELP101 or Placement	None
40	ELP103	Intermediate Polish	ELP102 or Placement	None
41	ELP105	Polish for Heritage Speakers	Placement	None
42	ELP201	Modern Polish Literature	Placement	None
43	ELR102	Elementary Russian 2	ELR101 or Placement	None

44	ELR103	Intermediate Russian	ELR102 or Placement	None
45	ELR105	Russian for Heritage Speakers	Placement	None
46	ELR201	Russian Literature of the 20th Century	Placement	None
47	ELS102	Elementary Spanish 2	ELS101 or Placement	None
48	ELS103	Intermediate Spanish 1	ELS102 or Placement	None
49	ELS104	Intermediate Spanish 2	ELS103 or Placement	None
50	ELS105	Spanish for Heritage Speakers 1	Placement	None
51	ELS106	Spanish for Heritage Speakers 2	Placement	None
52	ELS115	Spanish for Healthcare Professionals	Placement	None
53	ELS200	Latin American Literature 1	Placement	None
54	ELS201	Latin American Literature 2	Placement	None
55	ELS204	Latin American Civilizations	Placement	None
56	ELS209	Spanish Grammar and Usage	Placement	None
57	ELS210	Advanced Spanish Composition	Placement	None
58	ELT102	Elementary Tibetan 2	Placement	None
59	ELT105	Tibetan for Heritage Speakers	Placement	None
60	ELU102	Elementary Uzbek 2	ELU101 or Placement	None
61	ELU105	Uzbek for Heritage Speakers	Placement	None
62	ELV102	Elementary Bengali 2	ELV101 or Placement	None
63	ELV103	Intermediate Bengali	ELV102 or Placement	None
64	ELV105	Bengali for Heritage Students	Placement	None
65	ELV201	Modern Bengali Literature	Placement	None
66	ELY102	Elementary Haitian Creole 2	ELY101 or Placement	None
67	ELY105	Haitian Creole for Heritage Students	Placement	None
68	ELZ102	Elementary Portuguese 2	ELZ101 or Placement	None

Self-assessment Flowchart for Modern Language Registration in Fall 2023

Luis Guzmán Valerio
 lguzmanvalerio@lagcc.cuny.edu
 Tuesday, October 10th, 2023

The Modern Languages (ML) Program has replaced the placement exam with students' self-assessment for the placement of ML courses. We have removed all placement exam requirements for the ML courses so that students can sign up for any level of ML course on CUNYFirst by themselves based on their self-assessment of ML proficiency. The flowchart below helps students identify an appropriate ML course to sign up for in Spring 2024. Start from **Start Here** and follow the instructions.



See the back of this page and find the class code (e.g., 105-level Spanish = ELS105). If the class is not listed on this document, it is not offered in Fall 2023. Please consider taking another language. If you find your course, go to CUNYFirst (<http://cunyfirst.cuny.edu/>) and sign up for the class. If you have trouble signing up for class on CUNYFirst, please contact one of the support staff on the back of this page.

Brief Introduction to the Modern Languages Courses

The Modern Languages (ML) Program regularly offers American Sign Language, Arabic, Bengali, Chinese (Mandarin), French, Italian, Japanese, Korean, Portuguese, Polish, and Spanish. LaGuardia students in any major can take up to two ML courses in Pathways (WCGI and Additional Core) and students in some majors (i.e., Bilingual Ed, Early Childhood Ed, Childhood Ed, International Studies, Deaf Studies, and Japanese) are required to take the ML course as part of their Program Core.

List of Modern Languages Courses (only those active in Fall 2022)

- | | |
|---|--|
| 1. ELA101: Elementary Arabic 1 | 27. ELK250: Modern Korean Literature in Translation |
| 2. ELA102: Elementary Arabic 2 | 28. ELM101: American Sign Language 1 |
| 3. ELA105: Arabic for Heritage Speakers | 29. ELM102: American Sign Language 2 |
| 4. ELA201: Modern Arabic Literature | 30. ELM103: American Sign Language 3 |
| 5. ELA250: Modern Arabic Literature in Translation | 31. ELM104: American Sign Language 4 |
| 6. ELA260: Arab Cinema: Cultural Insights through Film | 32. ELM210: Sign Language Linguistics |
| 7. ELC101: Elementary Modern Chinese 1 | 33. ELN194: The Puerto Rican Community Minority Group Experience |
| 8. ELC102: Elementary Modern Chinese 2 | 34. ELP201: Modern Polish Literature |
| 9. ELC105: Chinese for Heritage Speakers | 35. ELR101: Elementary Russian 1 |
| 10. ELC201: Modern Chinese Literature | 36. ELS101: Elementary Spanish 1 |
| 11. ELC202: Contemporary Chinese Literature | 37. ELS102: Elementary Spanish 2 |
| 12. ELC203: Classic Chinese Literature | 38. ELS103: Intermediate Spanish 1 |
| 13. ELF101: Elementary French 1 | 39. ELS105: Spanish for Heritage Speakers 1 |
| 14. ELF102: Elementary French 2 | 40. ELS200: Latin American Literature I |
| 15. ELF201: French Literature from a Global Perspective | 41. ELS201: Latin American Literature II |
| 16. ELF250: Contemporary Francophone Lit in Translation | 42. ELS204: Latin American Civilizations |
| 17. ELI101: Elementary Italian 1 | 43. ELS205: Latin American Civilizations |
| 18. ELI102: Elementary Italian 2 | 44. ELS209: Spanish Grammar and Usage |
| 19. ELJ101: Elementary Japanese 1 | 45. ELS210: Advanced Spanish Composition |
| 20. ELJ102: Elementary Japanese 2 | 46. ELS250: Contemporary Latin American Fiction in Translation |
| 21. ELJ103: Intermediate Japanese 1 | 47. ELT105: Tibetan for Heritage Speakers |
| 22. ELJ104: Intermediate Japanese 2 | 48. ELV105: Bengali for Heritage Speakers |
| 23. ELJ250: Japanese Literature in Translation | 49. ELV201: Modern Bengali Literature |
| 24. ELK101: Elementary Korean 1 | 50. ELZ101: Elementary Portuguese 1 |
| 25. ELK102: Elementary Korean 2 | 51. ELZ102: Elementary Portuguese 2 |
| 26. ELK103: Intermediate Korean 1 | |

If you want to learn more about individual courses, please visit <https://bit.ly/LaGCC-ML> for the latest information about the modern language courses.

Contact Information for the Modern Languages Program

If you have questions about the modern language (ML) courses or have difficulty in registering for the ML courses, please contact following staff members for assistance.

- Technical questions about registration (e.g., how to use CUNYFirst):
 - registrar@lagcc.cuny.edu
- General question about language-related courses (Modern Languages, ESL, Education, Linguistics etc):
 - ELA@lagcc.cuny.edu
- Questions about the ML courses (e.g., textbook, syllabus etc):
 - Luis Guzmán Valerio, Coordinator of the Modern Languages and Literatures Program
lguzmanvalerio@lagcc.cuny.edu
 - Julio Rosario, Coordinator of the Modern Languages Lab
jrosario@lagcc.cuny.edu